

RP123
0107
0003



## RETRACTA (Series 2) OA100 OXY-ACETYLENE HOSE REEL INSTRUCTION MANUAL

### INTRODUCTION

Thank you for purchasing a Retracta Auto Rewind Hose Reel.

The Retracta range of hose reels are a breakthrough in industrial quality hose reel design, performance, durability, versatility and cost. The efficiency, safety and convenience benefits of auto rewind hose reels are now available for most situations where a hose is required

Manufactured from the highest quality weather resistant materials, the tough high impact polypropylene is U.V. stabilised, designed for all purpose corrosion free durability. The rewind mechanism is lubricated and sealed for trouble free operation.

This retractable hose reel promotes a neat and tidy good-looking work area, reducing the possibility of accidents, and improves the work environment. Safety is enhanced by low recoil tension even with the hose fully extended.

With your appropriate care, combined with the Macnaught guarantee of dependable after sales service, you will be assured of continuous safe, efficient and reliable product operation.

### GENERAL INFORMATION

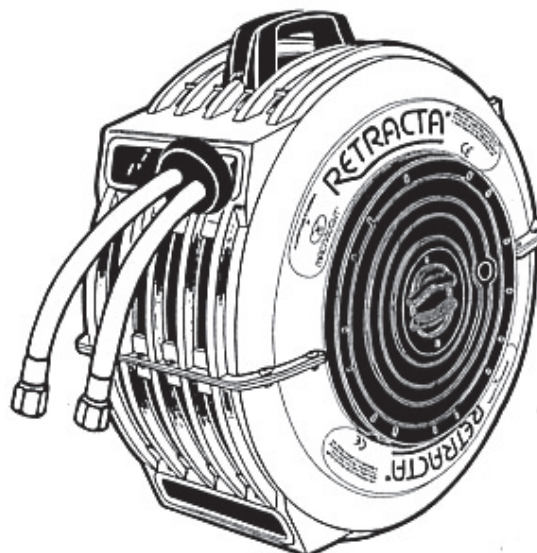
This manual assists you in operating and maintaining your new retractable hose reel. The information contained will help you ensure many years of dependable performance and trouble free operation.

Please take a few moments to read through this manual before installing and operating your new retractable hose reel. If you experience problems with the product, refer to the procedures contained within this instruction manual. If you require further assistance please contact your local Macnaught distributor, or local Macnaught service centre.

### IMPORTANT INFORMATION

Please read and retain this instruction manual to assist you in the operation and maintenance of this quality product.

Your safety is important to us. Please read, understand and follow all safety instructions listed below. Some of these instructions alert you to the potential for personal injury. "Cautions" listed throughout the manual advise of potential practices or procedures which may cause damage to your equipment.



Make sure all operators have access to adequate instructions about safe operating and maintenance procedures.

This hose reel contains a pre-tensioned spring inside the drum assembly. For safety reasons the drum assembly is a non-repairable item. DO NOT under any circumstances try to open the drum assembly. A new drum assembly will be required if the spring is damaged.

DO NOT exceed the maximum working pressure stated on the product label.

The maximum installation height is 4.5 meters (15ft) above the ground.

The maximum weight of hose end tools is 2kg (4lb).

This reel contains a positive latching mechanism, which enables the reel to be mounted in any position.



**PLEASE READ THIS IMPORTANT SAFETY INFORMATION CAREFULLY BEFORE USE.**

The following additional safety information applies to the Retracta Oxy-Acetylene Reel. For your safety please read and follow the safety instructions detailed below.

Oxygen Acetylene Gas is hazardous material that can cause serious accidents and injuries if proper precautions and safe practices are not followed.

Operation and maintenance of Oxy Acetylene Gasequipment should conform to the provisions of the American National Standard Z49-1 "Safety in Welding and Cutting".

**Leak test all connections and hose reel swivels prior to initial use (refer “Gas Leak Test Procedure”) and repeat at frequent intervals. It is recommended that leak tests on all equipment be carried out at least monthly and on the replacement of cylinders and after maintenance or replacement of any equipment, component part or hose.**

**For O-Ring seal lubrication use only ‘Tranz’ 1434 or an equivalent inert lubricant when required. DO NOT allow oil or grease to come in contact with the swivel or Oxy-Fuel gas equipment.**

## SAFETY PRECAUTIONS

**ONLY** use this Retracta reel for the Oxy Acetylene gas combination.

**DO** locate equipment in well ventilated areas.

**DO** run leak tests on your total system including the Hose Reel Swivel frequently. (Refer to the Retracta Operating and Service Instructions).

**DO** repair or replace equipment and hoses immediately any gas leak is detected. Leaking Oxygen or Acetylene can cause serious fire and personal injury.

**DO** examine the hose, reel swivel and other equipment for damage (including leaks) should a “Flashback” occur. Replacement of swivel seals is recommended. The use of “Flashback” check valves to reduce the risk of backflow and “Flashback” is also recommended.

**DO** use only Retracta replacement swivel components and seals as supplied by Macnaught. Obtain replacement parts from your local Authorised Macnaught Service Centre or from Macnaught.

**DO NOT** allow grease and oil to come into contact with any Oxy-Acetylene equipment, components or hose. These materials ignite easily and burn violently in the presence of Oxygen.

**DO NOT** use pipe fitting compounds or thread lubricants in making connections.

**DO NOT** direct the gas flame at the hose or hose reel.

**DO NOT** exceed the recommended maximum Acetylene draw off rate from the cylinder and only operate when the cylinder is upright. Liquid acetone solvent contained in the cylinder can escape and damage the hose, hose reel seals and other equipment.

**DO NOT** work with damaged or faulty equipment or hoses.

## INSTALLATION

- 1) Attach the carry handle to the reel casing above the reel hose mouth, using the screws provided.
- 2) The reel can only be mounted in one of the following positions shown. (Refer Fig 1, 2, 3, 4 )

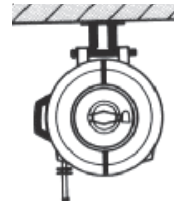
If you choose the most popular positions (1) and (2) you should use the standard (BU100) bracket. If using position (3) and (4) you will need the optional bracket (BB100).

**Fig.1 Wall / BU100**



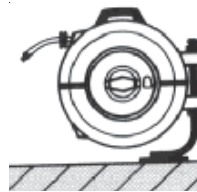
Up to 6ft above ground

**Fig.2 Overhead / BU100**

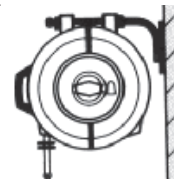


Up to 15ft above ground

**Fig.3 Floor/Bench/BB100**



**Fig.4 High Wall/BB100**



Between 1.8m (6ft) and 4.5m (15ft) above ground

3) Fix mounting bracket in required location and position reel onto bracket. (Brackets can be padlocked for additional security). Oxy Acetylene reels should only be used in well ventilated areas.

4) Connect supply hose to reel inlet allowing sufficient space for reel to swivel 180° on bracket. Swivel rotation can be avoided (in the overhead position only) by adding the locking bracket (RB9) supplied.

Make all connections dry. DO NOT use pipe fitting compounds, thread lubricants, oil or grease. Tighten hose connections with a spanner. Oxygen hoses use only right hand threaded connections. Note Acetylene hoses use left hand threaded connections.

## ⚠ CAUTION

**Test the system and all connections for leaks prior to use. Re-test the system frequently (once per month approx) and on each change of gas cylinder or after maintenance.**

## POSITIVE LATCH OPERATION

Pull out the hose to the required length.

**Note:** A clicking noise can be heard every half revolution of the drum.

**To latch the reel,** allow the reel to slowly retract after hearing the 1st, 2nd or 3rd click.

**To unlatch the reel,** slowly pull out the hose until the clicking noise stops, then let the hose slowly retract until the hose stopper rests against the reel mouth.

## ⚠ CAUTION

**To prevent injury or damage occurring, do not let go of the hose during rewinding.**

## MAINTENANCE

This section details the step-by-step procedures that you may require for the general use and maintenance of your reel. Please keep this instruction manual for future reference.

### GAS LEAK TEST PROCEDURE

Test Oxygen /Acetylene hose lines separately. Ensure that all connections from the cylinder through to the torch are tight.

- 1) Close both torch valves.
- 2) Open the Oxygen cylinder valve and adjust the delivery pressure to 25psi or more.
- 3) Close the Oxygen valve and observe the delivery pressure gauge. If a drop in pressure occurs, re-pressure the hose and test all the connections including the hose, swivel and swivel body by brushing with warm soapy water solution looking for the presence of any bubbles.
- 4) Open the Oxygen valve at the torch and re-close to vent the Oxygen line. Repeat steps 1, 2 and 3 with the Acetylene, with the delivery pressure set at 10 psi. Vent the Acetylene line.
- 5) Replace or repair any faulty items immediately and repeat 'Leak test' procedure.

### REMOVAL / REPLACEMENT OF INLET CONNECTION SIDE PLATE

- 1) Pull the hose out until it is fully extended and allow the hose to latch after hearing the 1st, 2nd or 3rd click.
- 2) Place reel on a clean bench with the inlet side plate (3) face up. Remove screw located at the edge of the inlet plate. Rotate plate clockwise.
- 3) Swivel assembly and hose will come away attached to the inlet side plate.
- 4) To replace inlet side plate, suspend reel between your body and edge of bench. Reposition the plate and turn counter-clockwise. Relocate side screw.

### SWIVEL SEAL REPLACEMENT

#### CAUTION

**Use only genuine Retracta O-Ring replacement kits. The use of any other seals can be dangerous. Ensure that the replacement procedure is carried out in an oil and grease free, clean environment.**

- 1) Pull the hose out until it is fully extended and allow the hose to latch after hearing the 1st, 2nd or 3rd click.
- 2) Place reel on a clean bench with the inlet side plate (3) face up. Remove screw located at the edge of the inlet plate. Rotate plate clockwise.

- 3) Remove the inlet side plate (Refer Removal/ Replacement Inlet Connection Side Plate).
- 4) Remove circlip (5) from end of swivel shaft assembly (1) and slide the inlet shaft from the swivel body (4).
- 5) Carefully remove the existing O-Rings by lifting O-Rings out from grooves using a small screwdriver. With o-rings extended, cut through the O-Ring onto the screwdriver face. Be careful you do not score o-ring grooves.

#### CAUTION

**Do not damage or score inlet shaft surface when removing or cutting o-ring.**

- 5) Before fitting the new o-rings ensure that both the inlet shaft and swivel are thoroughly wiped clean. Apply 'Tranz' 1434 lubricant (supplied in kit) or equivalent to the o'ring grooves of the inlet shaft.
- 6) Slide the o-ring applicator sleeve (supplied in kit) over the inlet shaft to expose only the furthestmost o-ring groove. Put the first o-ring onto the sleeve and slide up to the exposed groove. Withdraw the sleeve, stopping at each groove, and fit the o'rings one at a time following the same procedure.

### SWIVEL RE-ASSEMBLY

- 7) Slide the inlet shaft back into the swivel body and replace the circlip. Note that if the circlip groove is not exposed after fitting, the swivel body is back to front.
- 8) Slide the inlet shaft back into the drum assembly (6), pushing the complete unit home.
- 9) Replace the inlet side plate. (Refer to 'Removal / Replacement of Inlet Connection Side Plate').

### HOSE REPLACEMENT

- 1) Pull the hose out until it is fully extended and allow the hose to latch after hearing the 1st, 2nd or 3rd click.
- 2) Remove the inlet side plate (3) (Refer "Removal/ Replacement of Inlet Connection Side Plate"). The swivel shaft assembly (1) will come away attached to the inlet side plate.
- 3) Remove hose from swivel body (4). Remove remaining old hose from the mouth of the reel.
- 4) Use only recommended length and type of replacement hose.
- 5) Feed the new hose through top of reel mouth and into opening on reel drum which gives access to the swivel compartment. Replace and secure the internal hose stopper 5" (13cm) from the end of hose assembly. Reconnect hose.
- 6) Replace inlet side plate (3) (Refer "Removal/ Replacement Inlet Connection Side Plate").

- 7) Place the reel in a vertical position and while holding the reel pull the hose out past the last clicking noise and carefully guide the hose onto the drum
- 8) If the replacement hose is the same length as the old hose no tension adjustment is necessary. If spring tension adjustment is required refer to the " Spring tensioning and latch side plate removal" procedure.

 **CAUTION**

**Test the reel for leaks prior to any further use**

### **SPRING TENSION AND LATCH SIDE PLATE REMOVAL**

- 1) Place reel on a clean bench with latching plate (9) face up.
- 2) Release spring tension by opening tension plate (8) and place handle of a pair of pliers in the exposed slots. Grip the pliers firmly and remove the two screws holding the tension plate (8) and carefully allow the tension plate to slowly unwind counter clockwise.

- 3) Remove screw holding tension plate and remove tension plate. Remove screw located at the edge of the latching plate. Turn latching plate clockwise and remove, this will expose the latching cup assembly.

- 4) To replace latching plate, suspend reel between your body and edge of the bench. Reposition the plate and turn counter clockwise. Relocate side screws, replace tension plate and fixing screw.

- 5) Reload spring tension by using the same tool (as in step 2) and wind tension plate clockwise until hose stopper is firmly against the reel mouth, some resistance will be felt. Then add approximately six (6) complete 360 deg. tension turns. Hold the tension plate in this position align dimples on tension plate to latching side plate and replace the two screws. Close

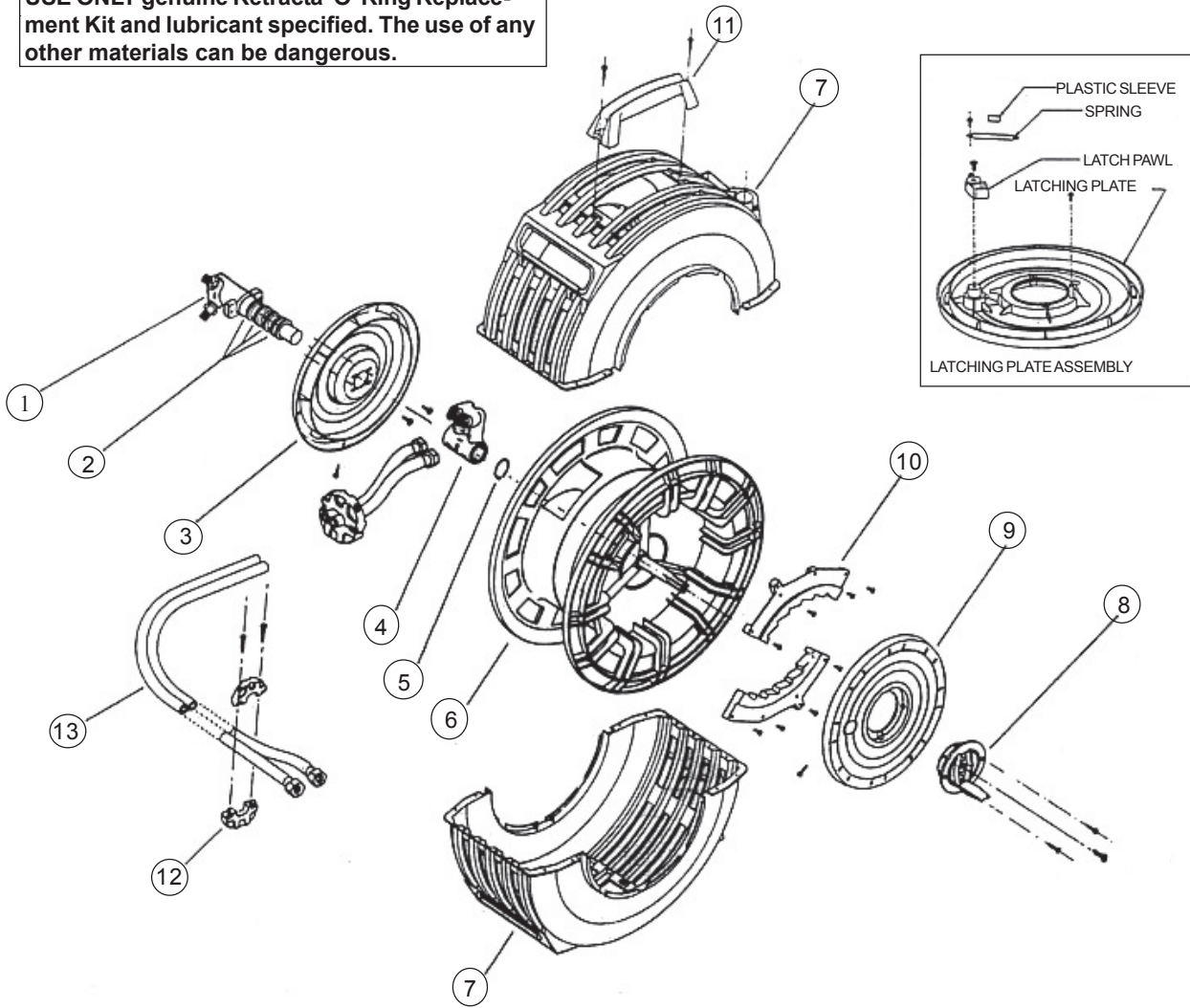
tension plate and cover.

 **CAUTION**

**Test the reel for leaks prior to any further use.**

# PARTS DIAGRAM

USE ONLY genuine Retracta 'O' Ring Replacement Kit and lubricant specified. The use of any other materials can be dangerous.



## PARTS LIST

OA100 REEL PARTS						
ITEM	PART No.	No. off	PART or SET		KIT. REF	DESCRIPTION
1	RS79	1		RS79s (AUST)		SWIVEL SHAFT ASSEMBLY
2	RS59	1	OA-1K	RS53s (USA)		SWIVEL SEAL KIT
3	RP2	1	order RP34s			INLET SIDE PLATE
4	RS80	1		RS79s (AUST)		SWIVEL BODY ASSEMBLY
5	Z9	1	Z9s			CIRCLIP
6	RP35	1	RP35-Black			DRUM ASSEMBLY (incl Spring)
7	RP36	1		RP36Cs * incl RP6s		OUTER CASING (LOWER)
7	RP36s	1				OUTER CASING incl MOUTH GUARD
8	RP90	1				TENSIONING PLATE ASSEMBLY
9	RP114	1		RP34s (incl Item 3)		LATCH SIDE PLATE ASSEMBLY
10	RP115	1				RATCHET PLATE
11	RP6	1	RP6s			CARRY HANDLE
12	Z22s	1		RH30s		HOSE STOPPER
13	RH30	1				HOSE REPLACEMENT KIT
	RB9	1	RB9s			LOCKING BRACKET
	BU100	1	BU100			STANDARD WALL BRACKET

\* NOMINATE COLOUR WHEN ORDERING REPLACEMENT MOULDINGS

**NOTES:**



**NOTES:**

# TROUBLE SHOOTING GUIDE

PROBLEM	REMEDY
<p><b>1. Hose will not retract</b></p> <p>1. Hose bunching.</p> <p>2. Spring tension too light.</p> <p>3. Replacement hose too heavy.</p>	<p>1. Pull hose out and rewind guiding the hose to avoid bunching.</p> <p>2. Refer to “Spring tension and latch side plate removal”.</p> <p>3. Replace hose with recommended hose, refer to “Hose Replacement”.</p>
<p><b>2. Reel will not latch</b></p> <p>1. The hose has been pulled past the latching teeth.</p> <p>2. Broken latching pawl or pawl spring.</p>	<p>1. Allow the reel to slowly retract after hearing the 1st, 2nd or 3rd click.</p> <p>2. Replace broken components. Refer to “Spring Tension and Latch Side Plate Removal”.</p>
<p><b>3. Reel Leaks.</b></p> <p>1. Damaged Hose.</p> <p>2. Loose fittings.</p> <p>3. Worn swivel seals</p>	<p>1. Replace hose. Refer to “Hose Replacement”.</p> <p>2. Tighten Fitting. refer to “Removal / Replacement of inlet Connection Side Plate”.</p> <p>3. Refer to “Swivel Seal Replacement”.</p>



Macnaught Pty Ltd  
 PO Box 90 Arncliffe NSW 2205 Australia  
 Telephone (02) 9567 0401  
 Facsimile (02) 9597 7773  
 Email: sales@macnaught.com.au  
 Web: www.macnaught.com.au



## macnaught warranty

1. Macnaught Pty Ltd (“Macnaught”) warrants that all products manufactured by Macnaught and/or supplied by Macnaught under the “Macnaught” brand, excluding M-Series positive displacement meters (“Meters”) and components subject to wear, will be free from any defects caused by faulty materials or workmanship (“Warranty”) for a period of 5 years from the date of purchase of the product.

2. For products (excluding Meters) which carry the “Macnaughtdesign” endorsement, an additional Warranty period of 5 years applies to all mechanical components (excluding electronic and electrical components), giving a total Warranty period of 10 years.

3. For Meters, the Warranty period is 12 months from the date of purchase of the product.

4. For components contained in all products which are usually subject to wear from normal operation of the products (such as o-rings, seals, springs, hoses and batteries), the Warranty period is 12 months from the date of purchase of the relevant product.

5. For products and components which are not manufactured by Macnaught and are supplied by Macnaught under a brand name other than “Macnaught”, the Warranty period is the longer of 12 months from the date of purchase of the relevant product and the period of the manufacturer’s warranty.

6. The warranties contained in clauses 1, 2, 3, 4 and 5 above are conditional on the purchaser, during the relevant Warranty period:

- delivering to Macnaught a detailed notice setting out full details of any defect in any product and details of the date and place of purchase (together with copies of purchase receipts and/or other supporting documents), and
- at the purchaser’s own cost, returning the defective product to the nearest authorised Macnaught service centre.

7. Subject to compliance by the purchaser with clause 6, Macnaught shall, at its option, repair or replace any product or component found defective by its inspection by reason of faulty materials or workmanship of Macnaught.

8. This Warranty does not cover the failure of products, parts or components which, in the sole judgment of the Macnaught, arises other than from faulty materials or workmanship of Macnaught, including misuse, abrasion, corrosion, negligence, accident, substitution of non-Macnaught parts, unauthorised modification, improper use, storage or handling, faulty installation or tampering by the purchaser or any third party.

9. If Macnaught’s inspection discloses no defect in material or workmanship, repair or replacement and return (at Macnaught’s sole option) will be made at customary charges, which will be advised to the purchaser.

10. Macnaught’s liability and the purchaser’s rights under this Warranty shall be limited to the repair or replacement of defective products or components and particular, shall not extend to any direct, special, indirect or consequential damage or losses of any other warranties.

11. The foregoing Warranty supersedes, voids and is in lieu of any other warranties.

This Warranty does not form part of, nor does it constitute, a contract between Macnaught and the end-user or purchaser. It is additional to any warranty given by the seller of the products. This Warranty does not exclude, limit, restrict or modify the non-excludable rights or remedies conferred upon the end-user or purchaser, or the non-excludable duties or liabilities imposed on the seller or Macnaught, by Part V, Division 2, 2A, and Part VA of the Trade Act 1974 (Commonwealth) or other rights conferred on the end-user or purchaser or duties or liabilities imposed upon Macnaught.